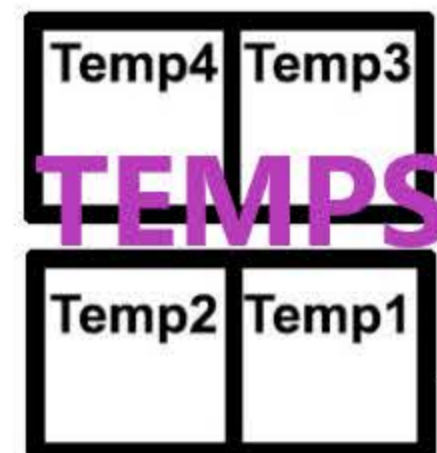
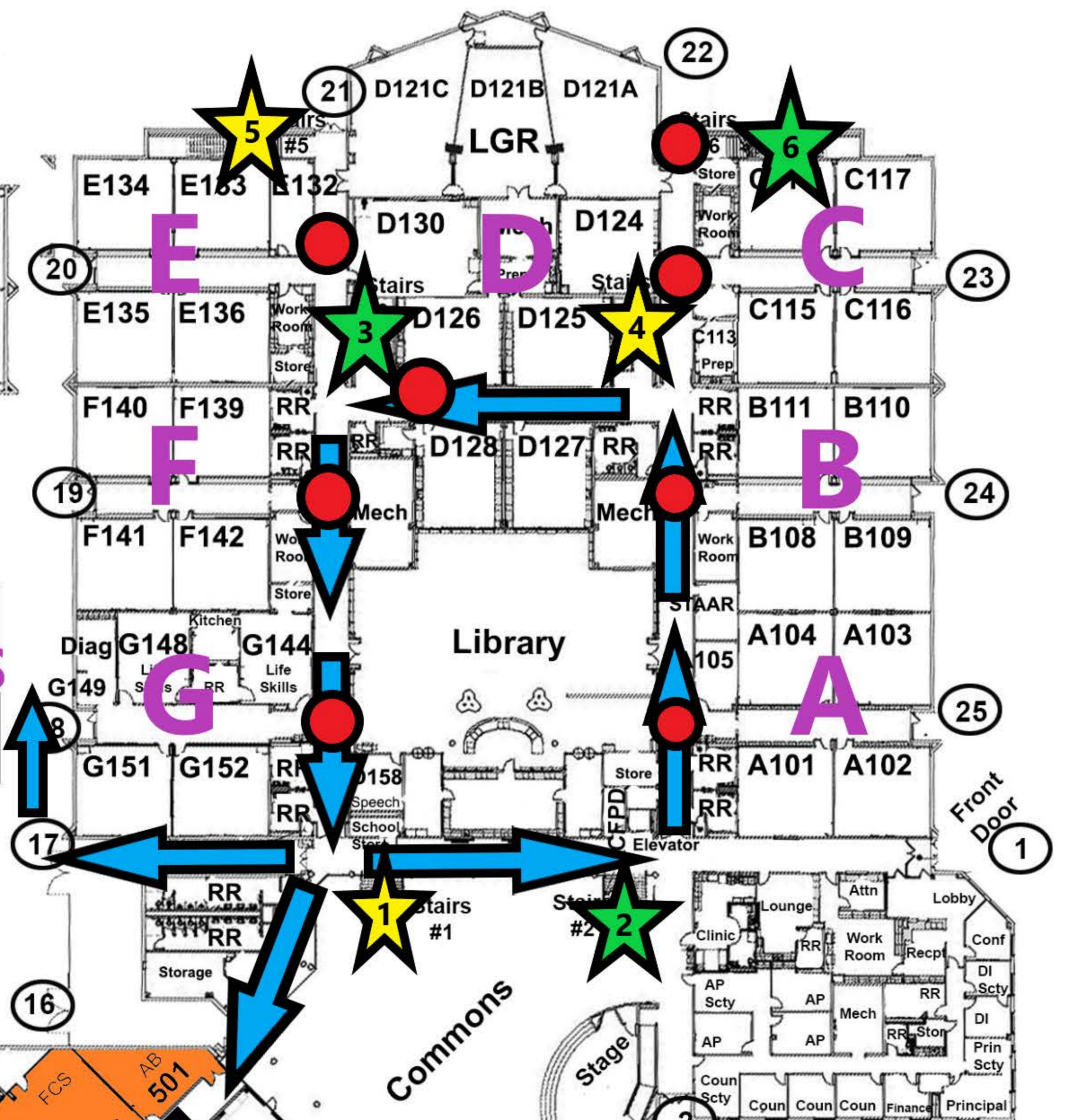


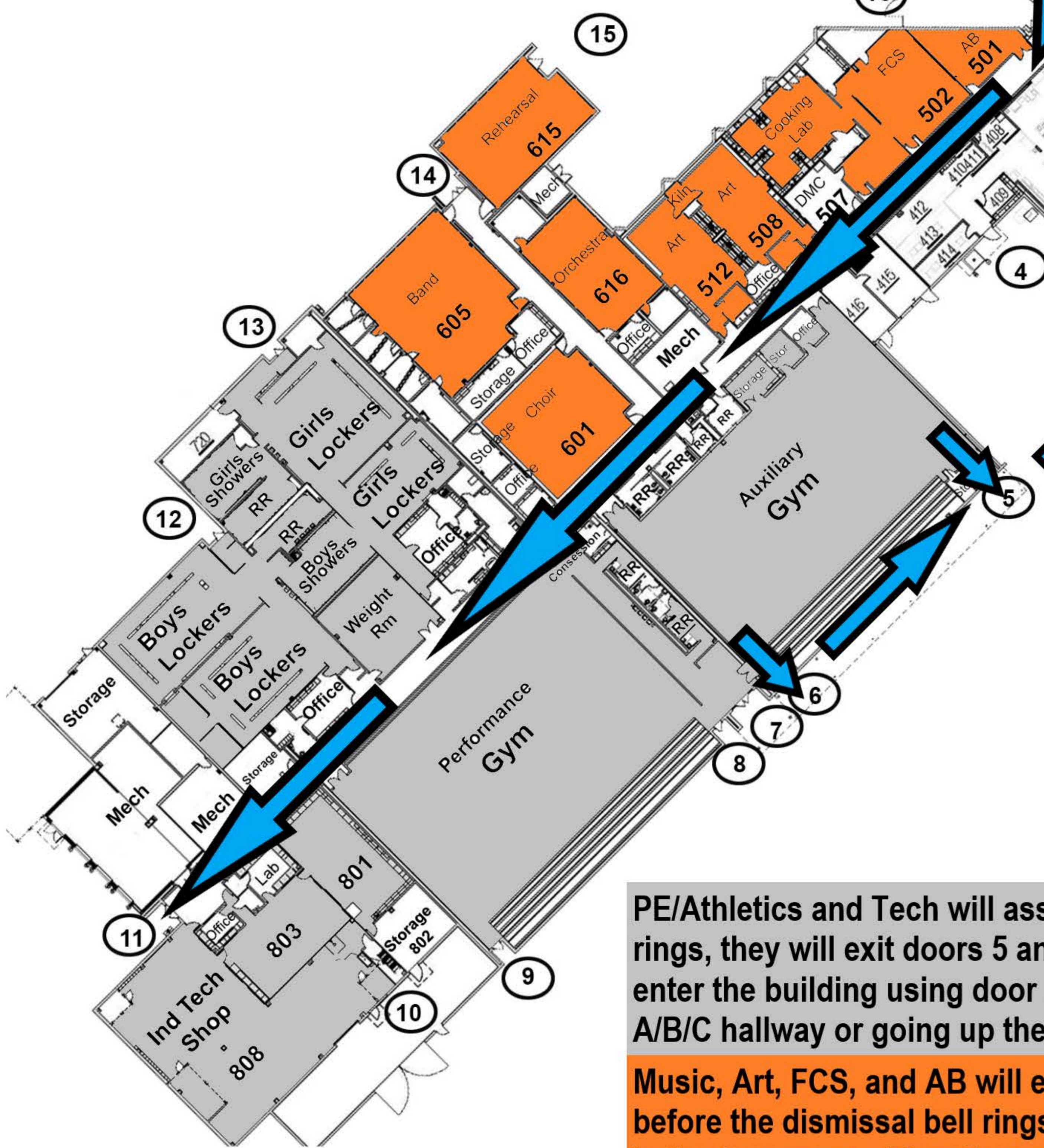
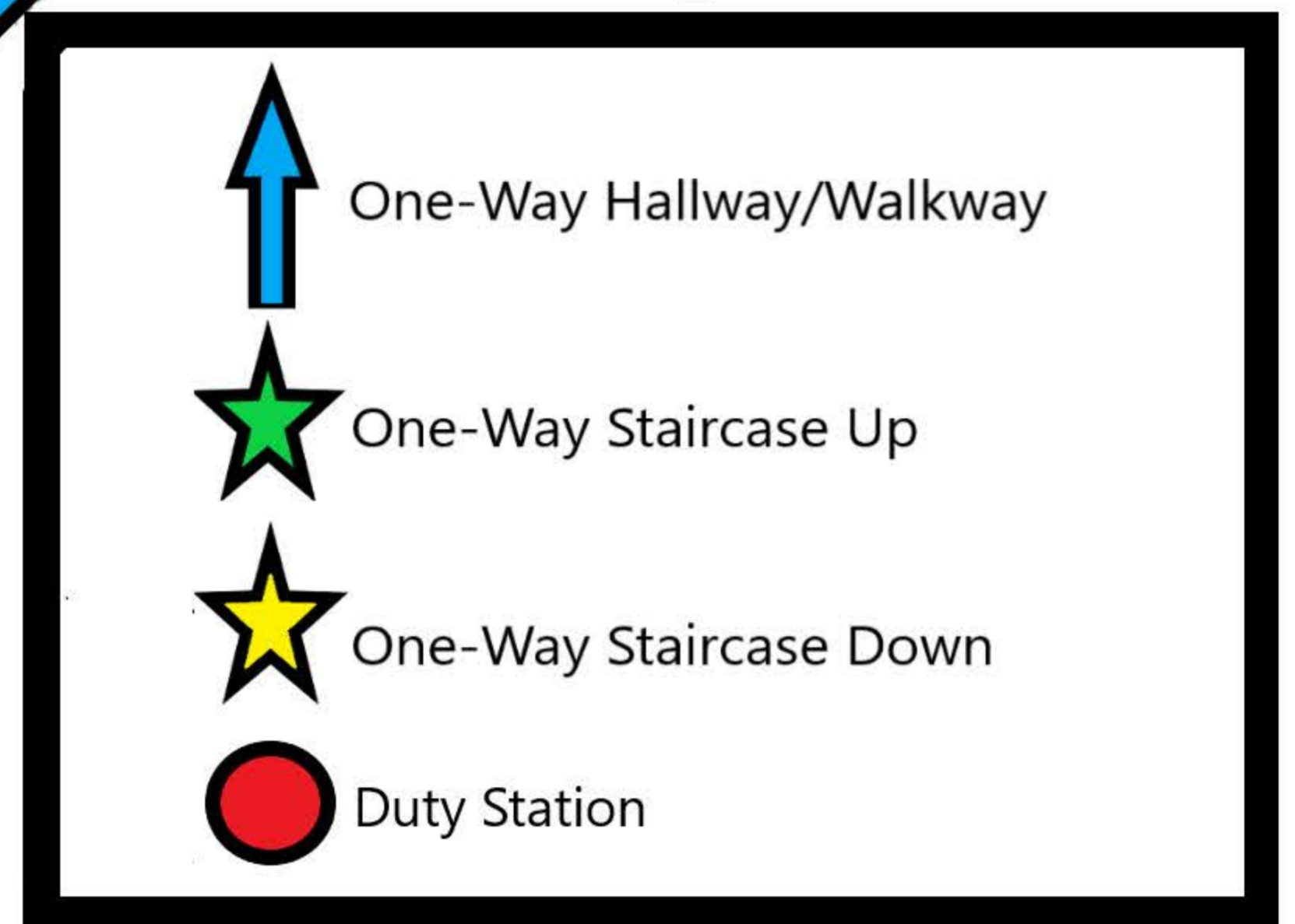
Second Floor



First Floor



Key



PE/Athletics and Tech will assemble in the Aux Gym. When the dismissal bell rings, they will exit doors 5 and 6, use the covered bus ramp walkway, and re-enter the building using door 2. They then rejoin the Lazy River going down A/B/C hallway or going up the stairs by the elevator.

Music, Art, FCS, and AB will enter the Elective hallway at least one minute before the dismissal bell rings. This head-start should minimize cross-traffic in the Commons. They then rejoin the Lazy River by the school store.